

RIDMAT/MRC VOLUNTEERS PROVIDING SUPPORT AT THE 2019 BRISTOL 4<sup>TH</sup> OF JULY PARADE

## RIDMAT/MRC Annual Report



**RHODE ISLAND**

2019

# Rhode Island Disaster Medical Assistance Team's Medical Reserve Corps

**RI**DMAT/MRC is a state-based 501 (c) 3 non-profit organization whose mission is to recruit, train, mobilize, manage and equip a volunteer response corps to enhance state and local capabilities. By working to reduce the vulnerability of Rhode Island and its communities to disaster risk through community public health activities, the promotion of personal and community preparedness and enhanced response capabilities, RIDMAT/MRC is active in preparing for and responding to the public health and emergency response needs of Rhode Island and its communities.

RIDMAT/MRC provides training to its members in the form of field hospital events. The goal of these events is aimed at training medical health professional volunteers to prepare for and respond to public health and emergency response disasters by providing hospital-level care to participants and spectators. RIDMAT/MRC's participation at these events alleviates surge on local EMS services and area hospitals and additionally familiarizes the volunteer with the processes and equipment that are used in the instance

of a public health emergency or disaster event.

The RIDMAT/MRC program utilizes and manages the State of Rhode Island's Emergency System for the Advance Registration of Volunteer Health Professionals (ESAR-VHP), RI Responds, to register, contact and credential its volunteers. Licenses are credentialed per the standards dictated by the Department of Health and Human Services ESAR-VHP guidelines.

RI DMAT/MRC aims to provide support to public health initiatives across the state to improve the health and wellness of Rhode Island, ultimately reducing the vulnerability of the population to disaster risk and improving our overall response efforts through high-level community training programs like NOPE-RI and Stop the Bleed.

### Unit Jurisdiction

RIDMAT/MRC is a state-based MRC unit designed to serve all communities within Rhode Island including five counties- Bristol County, Kent County, Newport County, Providence County, and Washington County.

The program and equipment are housed at RI DMAT, Inc. Headquarters located at 50 Barnett Lane West Greenwich, Rhode Island with an administrative office in Providence, Rhode Island.

### RIDMAT/MRC Mission

The mission of the Rhode Island Disaster Medical Assistance Team's Medical Reserve Corps is to recruit, train, mobilize, manage and equip a volunteer response corps to enhance state and local capabilities.

### RIDMAT/MRC Objective

To provide high quality training opportunities that prepare a volunteer corps, first responders and community members to safely and properly respond to every-day and emergent needs of their community.

**FAST FACT**  
NEW MEMBER REGISTRATIONS IN  
2019:

176

# 2019 Contracts and Partnerships

**RI** DMAT/MRC has provided a variety of support services in the past several years and enjoys mutually advantageous relationships with the Rhode Island Department of Health, Rhode Island Emergency Management Agency, Rhode Island State Police, Rhode Island Army and Air National Guard, to name



a few.

## RI Responds / ESAR-VHP Contract

The Rhode Island Department of Health renewed the contract with RI DMAT, Inc.'s Medical Reserve Corps program to manage and maintain the State's Emergency System for the Advance Registration of Volunteer Health Professionals (ESAR-VHP) known as RI Responds. RI Responds is a web-based registration and management tool, created by RIDMAT, used to identify and pre-credential healthcare providers who are licensed in Rhode Island *prior* to a large-scale disaster or public health emergency. The RI MRC Unit Coordinator is responsible for the day-to-day management of the system and its functions and would direct the overall activation of the system in the event of an emergency.

## RI DMAT Field Hospital Contract

RI DMAT, Inc. met the requirements of a contract with the Rhode Island Department of Health to maintain and provide training on an expanse of medical equipment known as the field hospital cache. The contract allows for the maintenance and purchase of durable medical equipment and consumable medical supplies to be used both during training events and in the instance of an activation. The contract also apportions for the maintenance and repair of equipment and fleet and for the storage and delivery of the Department of Health's mobile ventilator cache.

## Brown Emergency Medicine Residency Program

RIDMAT/MRC and the Emergency Medicine Residency program began a collaborative partnership in 2014. Each residency class participates in a RIDMAT/MRC orientation and is offered the opportunity to register and participate in RIDMAT/MRC planned training events as a requirement of community service hours. This collaboration is slated to continue in 2020.

## Rhode Island College School of Nursing

Students participating in the community health course at the nursing school participate in an orientation session brief for RIDMAT/MRC followed by Naloxone and Overdose Prevention Education program. This collaboration is slated to continue in 2020.

## Governor's Overdose Prevention and Intervention Task Force

The RIDMAT/MRC Coordinator, in her role as the Director of NOPE-RI, was appointed to the overdose task force as a representative of the Statewide Drug Overdose and Rescue Coalition in 2015. The aim of the task force is to work toward a data driven strategic plan to reduce the overdose death rate in the state and save lives.

## Naloxone and Overdose Prevention Education Program

The RIDMAT/MRC contracted with the RI Department of Health's Overdose Prevention Program to provide statewide training and education on overdose prevention, recognition and response. In addition, collect and manage statewide data on non-pharmacy and pharmacy distribution of naloxone to provide relevant data on saturation efforts and results.

## Community Overdose Engagement Contract

The RI Department of Health's Overdose Prevention Program contracted with RIDMAT/MRC to provide technical assistance to municipalities to either develop a community overdose response plan or initiate an activity from their existing overdose response plan. Stronger community engagement makes for a stronger state and a more robust response.

### FAST FACT

# 27.95%

Registered Nurses make up almost 30% of our volunteer base.

### FAST FACT

# 19.78%

EMS professionals are the second largest group in our volunteer base making up almost 20% of the team.

# RIDMAT/MRC Organizational Structure

**Executive Officer:** Initiated the formation of RIDMAT/MRC and is ultimately responsible for all aspects of the unit. Determines when the unit will be deployed, and which activities warrant involvement by members.

**Medical Officer:** Responsible for overall management of medical operations with support from the Operations, Logistics, and Hospital Operations sections.

**RI DMAT/MRC’s Program Director:** Manages day-to-day operations involved with all grant and contract management including meeting all deliverables, maintaining contact with volunteers, partner building, accounting and meeting national program requirements.

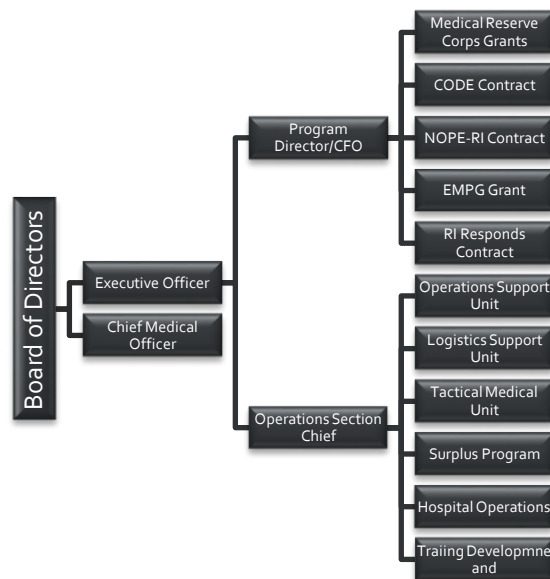
**Operation Section Chief:** Responsible for meeting the operational goal to provide useful training opportunities to prepare a volunteer corps, maintaining overall operability at Headquarters, building reliable partnerships to further involvement in preparedness and response

**Operations Support Unit:** Provides IT support, structure and innovative solutions to manage the overall operation of the organization.

**Logistics:** Ensures facility and support needs are met, including: supply and re-supply of medical and non-medical equipment and materials, headquarter support, communications, IT support, and food and water for staff/volunteers.

**Hospital Operations:** Ensures that clinical staff are familiar with their responsibilities, training is in line with organizational goals and that patients are treated properly and safely during a response and/or training.

**CODE Project Manager:** Responsible for managing the CODE contract by offering technical assistance to towns and cities during the creation of their overdose response plans. The PM reports to the NOPE-RI director.



**Tactical Medical Unit:** The Tactical Medical Unit (TMU) provides support to the Rhode Island State Police, Municipal Academy, Municipal Departments and the RI Airport Police by providing educational in-services, medical support during call outs and medical support during training activities.

**Training and Development:** Main objective of training and development is to provide high-quality, relevant training to registered members as well as community and state partners.



# RIDMAT/MRC Membership

Any person interested in joining RIDMAT/MRC is eligible to complete the online application.

Registered RIDMAT/ MRC members become eligible for training programs and receive basic correspondence once the on-line application process has been complete.

Members are not required to live or work in the state however, must understand that if a member is a licensed healthcare provider in a neighboring state and does not have a valid healthcare license in Rhode Island, that member will fill a non-clinical role to meet the credential requirement of the RI Responds system.

In the event of a large public health emergency, RIDMAT/MRC members will be utilized commensurate with their training and skills. Though there are some tasks that members whose licenses have expired will be prohibited from performing, their expertise and training may be used in other areas.

If an emergency is of sufficient magnitude, the governor may waive licensure requirements and authorize retired and out-of-state medical professionals to perform various procedures. In this case, members whose licenses are inactive may be granted additional capabilities to meet the urgent needs and address the unusual life threats that may be posed by a disaster.

## RIDMAT/MRC Membership Requirements

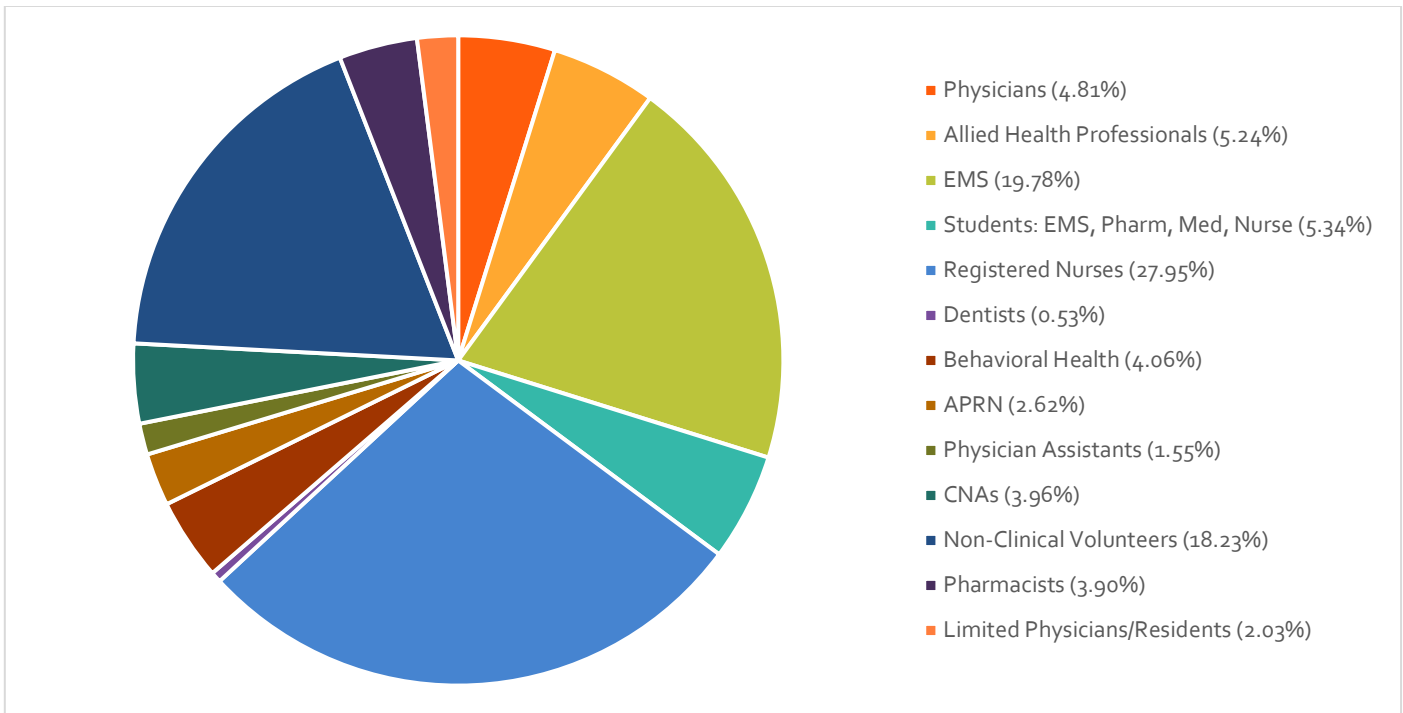
**RI MRC Online Application** – RIDMAT/MRC volunteers register at [www.riresponds.org](http://www.riresponds.org) and must include an active email address with last name and first name, home address and phone number.

**New Member Orientation Session** - Orientations are required for new members of RIDMAT/MRC to be covered and considered active. Orientations offer a tour of the facility, badge picture and t-shirt distribution as well as a review of the Medical Reserve Corps and its mission. The orientations last one hour and are offered at the RIDMAT/MRC headquarters at 50 Barnett Lane West Greenwich, RI 02817.

**Exclusion from the Office of the Inspector General's List of Excluded Individuals** - Office of the Inspector General has the authority to **exclude individuals** and entities from federally funded health care programs and maintains the **List of Excluded Individuals and Entities (LEIE)**. The LEIE is updated monthly with all individuals and entities that have been excluded from participation in Federal health care programs and each registered volunteer is credentialed against this list. If a volunteer is listed on the LEIE, their account is inactivated, and they are notified.

**License Verification**- All RI registered healthcare professional licenses are verified through the RI Responds system. The RI Responds system verifies credentials against the database maintained by RI Department of Health's Licensing Unit (License 2000) for up-to-date, in-state license information on all of its healthcare volunteers.





Physicians	90	APRN	49
Allied Health Professionals	98	Physician Assistants	29
EMS	370	CNAs	74
Students (EMS, Pharm, Med, Nurse)	100	Non-Clinical Volunteers	341
Registered Nurses	523	Pharmacists	73
Dentists	10	Limited Physicians (Residents)	38
Behavioral Health	76	<b>Total</b>	<b>1871</b>

## VOLUNTEERING IS GOOD FOR YOU

### Helping Others Helps You

Volunteering can give the great satisfaction of helping others. For many individuals, volunteering gives them a sense of purpose and meaning in their lives. It helps to broaden their social networks, and that can have many positive effects. Volunteering provides opportunities for social interactions with fellow volunteers while supporting an important activity in the community. Interacting with others with a common interest is also a great way to create new relationships. You can choose to support daily public health activities, volunteer during emergencies – or both. Although there are training requirements, there are not service hour requirements. We understand that your work and personal commitments will determine your availability. When there is an emergency, we hope we have provided you enough opportunity to feel comfortable signing up and that you will be ready and able to respond.

## 2019 Training Program

RIDMAT/MRC provides both classroom training sessions and field hospital training opportunities to its volunteers. The objective of RIDMAT/MRC's program is to provide useful training opportunities that prepare a volunteer corps to safely and properly respond to the needs of its community; whether public health or emergency response. Classroom Events focus on relevant issues in the areas of public health, personal and community preparedness, and healthcare practice. During planned field hospital event trainings, RIDMAT/MRC volunteers set-up field hospitals and provide physician-level care to participants and spectators at mass gathering events across the state. These field hospital training events allow for the familiarity of the staff, the equipment and processes that are utilized in the event of a disaster in Rhode Island.

## Field Hospital Operations Planned Events

Program	# of Events	# of Shifts	# of Hours	Economic Value
Field Hospital Operations	23	339	2,883	\$95,020.63

Mission	Date	Volunteer Total	Hours	Mission	Date	Volunteers	Hours
RISP 5K	4/28/19	14	82.83	Newport JAZZ Festival SUNDAY	8/4/19	32	320.8
State Police Day	5/15/19	1	5.53	APDA Optimism Walk	9/7/19	8	46.4
2019 Sheriff's Agility Shift 2 SATURDAY	5/18/19	4	26.73	Rally4Recovery	9/14/19	2	11.95
2019 Sheriff's Agility Shift 1 SATURDAY	5/18/19	4	24.53	Airport Full Scale Exercise	9/21/19	10	64.42
Bristol 4th of July Parade	7/4/19	30	230.32	Mission of Mercy SATURDAY	9/28/19	4	26
Thursday LOGISTICS SET UP Music Festivals	7/25/19	6	41.94	Mission of Mercy SUNDAY	9/29/19	4	26
Newport FOLK Festival FRIDAY	7/26/19	30	276.15	Scituate Art Festival SATURDAY	10/12/19	7	56
Blessing of the Fleet Road Race	7/26/19	17	105.33	Newport Marathon Set-Up	10/12/19	7	55.95
Newport FOLK Festival SATURDAY	7/27/19	41	385.98	Scituate Art Festival SUNDAY	10/13/19	6	49.08
Newport FOLK Festival SUNDAY	7/28/19	30	323	Newport Marathon	10/13/19	22	178.5
Newport JAZZ Festival FRIDAY	8/2/19	24	213.56	Scituate Art Festival MONDAY	10/14/19	10	80.48
Newport JAZZ Festival SATURDAY	8/3/19	26	251.17			<b>Total: 339</b>	<b>Total: 2,882.65</b>

## AHA CPR/AED Trainings

RIDMAT/MRC worked with the Rhode Island Department of Health to offer Free American Heart Association (AHA) HeartSaver CPR/AED Certification Courses, with a special overdose response section, across the state in 2019. The HeartSaver CPR/AED course trains participants to provide CPR and use an automated external defibrillator (AED) in a safe, timely, and effective manner.

RIDMAT/MRC collaborated with community partners across the state to host these trainings. In total, over 100 community members were trained and certified as an AHA CPR/AED HeartSaver at no cost to them. Three (3)

Training #	Date	# of Attendees
1	10/12/19	17
2	10/19/19	16
3	10/26/19	8
4	11/2/19	15
5	11/9/19	11
6	11/16/19	23
7	11/23/19	14
8	12/7/19	13
9	12/14/19	9
		<b>Total: 126</b>

## Hepatitis A Vaccination Clinics

Since March 2017, CDC's Division of Viral Hepatitis has been assisting several state and local health departments with Hepatitis A outbreaks, spread through person-to-person contact, that have occurred primarily among persons who use injection and non-injection drugs, and/or persons experiencing homelessness, and their direct contacts. With the outbreak of Hepatitis A occurring throughout the country, particularly in the neighboring states of Massachusetts and New Hampshire, the Rhode Island Department of Health (RIDOH) initiated a Hepatitis A Prevention Vaccination Strategy targeting the highest at-risk populations. RIDMAT/MRC was requested by RIDOH to manage vaccination clinics at various homeless shelters, feeding sites, and substance use program sites across Rhode Island beginning in April 2019.

<b>Mission</b>	<b>Date</b>	<b># of Volunteers</b>	<b>Total Hours</b>
Clinic Emmanuel House Hepatitis A Vaccination Clinic	4/17/19	4	12.63333
Seaman's Church Institute Hepatitis A Vaccination Clinic	4/17/19	4	14.05
Crossroads Hepatitis A Vaccination Clinic	4/22/19	8	25.33333
McKinney Cooperative Shelter Hepatitis A Vaccination Clinic	4/23/19	8	24.71667
Westerly Area Rest and Meals Hepatitis A Vaccination Clinic	4/23/19	5	16.6
Holy Family Home for Mothers and Children Hepatitis A Vaccination Clinic	4/24/19	2	5.566667
CCA Woonsocket Shelter Hepatitis A Vaccination Clinic	4/25/19	8	13.51667
Lucy's Hearth Hepatitis A Vaccination Clinic	4/25/19	3	9.75
New Beginnings Meal Site Hepatitis A Vaccination Clinic	4/25/19	4	11.13333
McAuley House (LUNCH) Hepatitis A Vaccination Clinic	4/26/19	8	27.13333
McAuley House (BREAKFAST) Hepatitis A Vaccination Clinic	4/26/19	6	18.2
Pawtucket Soup Kitchen Hepatitis A Vaccination Clinic	4/27/19	5	19.41667
Welcome House of South County Hepatitis A Vaccination Clinic	4/29/19	4	6.516667
St. George Episcopal Church Hepatitis A Vaccination Clinic	5/19/19	5	17.06667
Weber Renew Hepatitis A Vaccination Clinic	5/21/19	5	11.8
Road to Recovery CRANSTON Hepatitis A Vaccination Clinic	5/31/19	6	16.46667
Galilee Mission Hepatitis A Vaccination Clinic	6/13/19	6	22.05
YWCA Housing Central Falls Hepatitis A Vaccination Clinic	6/17/19	2	6.966667
Road to Recovery Hepatitis A Vaccination Clinic	6/18/19	5	19.63333
Weber Renew Pawtucket/Central Falls Hepatitis A Vaccination Clinic Mobile Outreach	6/27/19	2	7.05
Weber Renew Providence Hepatitis A Vaccination Clinic Mobile Outreach	6/28/19	2	7.366667
Bread of Life Hepatitis A Vaccination Clinic	7/23/19	2	5.866667
Sojourner House Hepatitis A Vaccination Clinic	7/31/19	3	7.65
St. John Baptist Hepatitis A Vaccination Clinic	8/19/19	2	6
East Bay Food Pantry Hepatitis A Vaccination Clinic	8/23/19	3	9
Be the Change Warwick Hepatitis A Vaccination Clinic	8/23/19	3	7.5
Discovery House Hepatitis A Vaccination Clinic	8/26/19	2	7
St Edwards Hepatitis A Vaccination Clinic	8/28/19	2	6
Rally4Recovery Hepatitis A Vaccination Clinic	9/7/19	3	3
Bridgemark Hepatitis A Vaccination Clinic	9/9/19	4	11.3
Be The Change Hepatitis A Vaccination Clinic	9/10/19	2	4.8
Christ Church Ministries Hepatitis A Vaccination Clinic	9/13/19	3	8.366667
Phoenix House Hepatitis A Vaccination Clinic	9/17/19	7	15.35
Rally4Recovery Hepatitis A Vaccination Clinic	9/21/19	2	7.866667
Mission of Mercy Hepatitis A Vaccination Clinic	9/28/19	2	18
<b>Total Clinics: 35</b>		<b>Total Shifts: 142</b>	<b>Total Hours: 430.6667</b>

**THE TIME TO PREPARE IS NOW**

<https://www.rimrc.org>

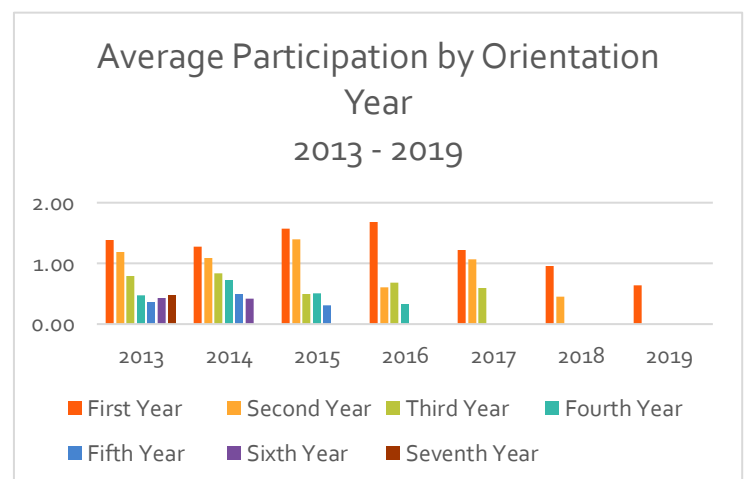
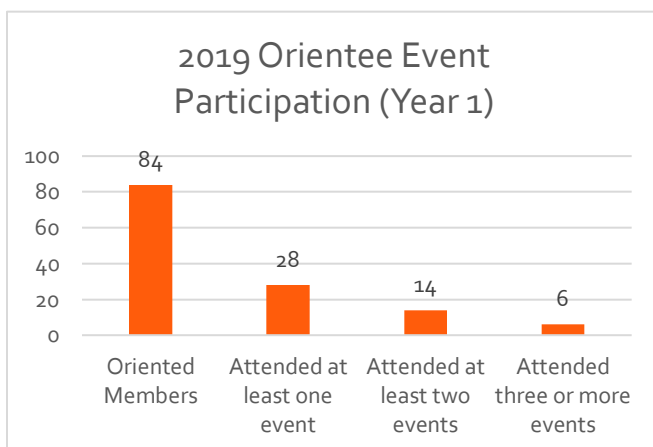
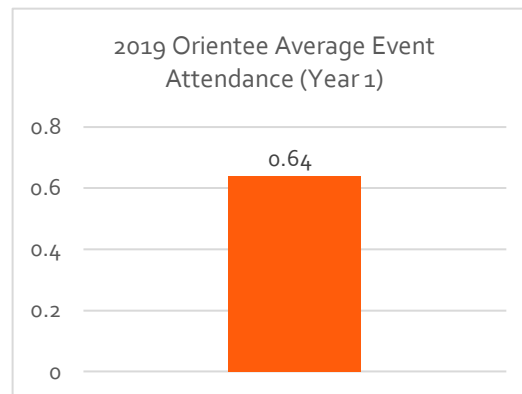
## 2019 Orientation Sessions

Program	# of Events	# of Volunteers	Volunteer Hours
Orientation Sessions	8	84	84

Orientations are required for new members of RIDMAT/MRC to be covered and considered active. Orientations offer a tour of the facility, badge picture and t-shirt distribution as well as a review of the Medical Reserve Corps and its mission. The orientations last one hour and are offered at the RIDMAT/MRC headquarters at 50 Barnett Lane West Greenwich, RI 02817

## Orientation Sessions

Date	Session	Location	Number Attended
3/20/19	RIDMAT/MRC New Member Orientation	RIDMAT/MRC	13
4/25/19	RIDMAT/MRC New Member Orientation	RIDMAT/MRC	11
5/20/19	RIDMAT/MRC New Member Orientation	RIDMAT/MRC	6
6/1/19	RIDMAT/MRC New Member Orientation	RIDMAT/MRC	3
7/1/19	RIDMAT/MRC New Member Orientation	RIDMAT/MRC	8
7/15/19	RIDMAT/MRC New Member Orientation	RIDMAT/MRC	15
7/17/19	Emergency Medicine Residents	Claverick	12
9/9/19	RIDMAT/MRC New Member Orientation	RIDMAT/MRC	16
			<b>Total: 84</b>





# Naloxone and Overdose Prevention Education

The Naloxone and Overdose Prevention Education Program's mission is to leverage the DMAT/MRC volunteer base to provide opioid overdose prevention education to organizations that plan to or have initiated a naloxone response program.

Our programming includes overdose prevention, recognition, and response training. In addition to in-person education, we serve as a clearinghouse for naloxone and overdose prevention training resources in the state, as well as encouraging and supporting efforts to expand access to naloxone.

Since its inception, NOPE-RI has trained over 7,000 individuals on how to prevent, recognize and respond to opioid overdose.

2019	Medical	First Responders/Law Enforcement	State Agencies	Schools	Public/Private Agencies	Totals
Q1	100	0	81	0	82	263
Q2	15	40	54	0	255	364
Q3	15	0	0	119	101	235
Q4	106	0	10	27	261	404
<b>Totals</b>	<b>236</b>	<b>40</b>	<b>145</b>	<b>146</b>	<b>699</b>	<b>1266</b>

## NaloxBox

### A Smart Solution to Public Access Naloxone and Opioid Overdose Response Tools

Opioid overdose is currently the leading cause of death among adults 50 years old and younger in the United States. The NaloxBox mission is to improve the capacity of bystander rescuers to save the lives of victims of opioid overdose by increasing access to publicly available overdose response resources in settings most in need of quickly accessible, public use naloxone.

*\*Naloxone is an opioid overdose reversal drug.*

## OPERATION STOP THE BLEED - RI

Providing bleeding control, recognition, and response education is a harm reduction intervention that has been demonstrated to save lives. Operation Stop the Bleed-RI (OSTB-RI) ramped up training activities during 2018. Dedicated members delivered critical training that encourages bystanders to become trained, equipped, and empowered to help in a bleeding emergency before professional help arrives. The teams provided bleeding control education and rescue skills to citizens and organizations.

Funding has been received and production as begun on the renovation of the OSTB-RI HUMVEE to deliver training in unique locations, like special events, retail shopping center parking lots, sporting events, or any other high traffic locations. The introduction of this mobile capability will make an incredible impact on our preparedness. Bringing the mobile training vehicle and team to a location will provide everyday citizens an opportunity to learn how to save a life with 12 minutes of training.

## Tactical Medical Unit Totals

The TMU provides support to the State Police, RI Municipal Police Academy, Municipal Departments and state agencies by offering educational in-services and medical support during training exercises, details and call outs.

Program	# of Events	# of Shifts	# Individuals	Volunteer Hours	Economic Impact
TMU	30	288	10	326	\$7,540.00

# Logistics and Operations

The majority of the work we do is behind the scenes. Logistics and operations ensure that our equipment, our fleet and our supplies are up to date, packaged and easily deployable. Logistics is always first on scene and last to leave and are the backbone of our organization. Log and operations project include, but not limited to, team administration, medical electronics maintenance, communications planning, vehicle maintenance and repair and warehouse and cache resupply. Most event planning, cache management and grant management are completed on a volunteer basis.



Thank you for your continued support of the Rhode Island Disaster Medical Assistance Team's Medical Reserve Corps program.  
For any inquiries into this report, please contact the RIDMAT/MRC Program Director,  
Erin McDonough, at [emcdonough@ridmat.org](mailto:emcdonough@ridmat.org)